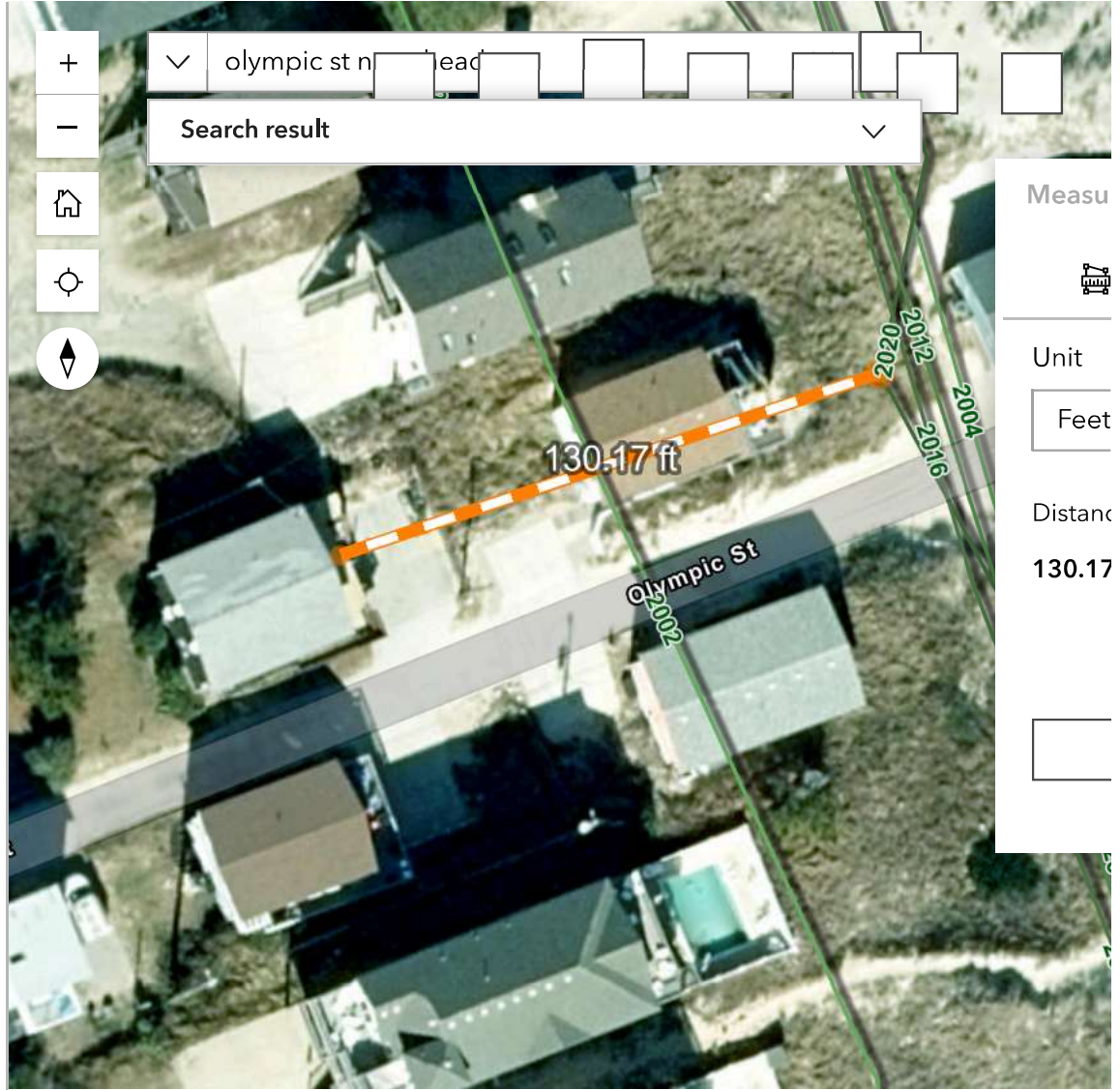


# NC Coastal Management

- ArcGIS World Geocoding Service ...
- AddressNC Geocoder ...
- DCM Office Locations ...
- >  Pending NC CRC Approval ...
- >  Setback Factors (oceanfront) ...
- >  Erosion Rates (oceanfront) ...
- >  Shorelines (oceanfront & estuarine) ...
- Vegetation Lines (oceanfront) ...
- >  Areas of Environmental Concern (AEC) ...
- >  Regulatory (other agency) ...
- >  USACE - Sand Availability & Needs ...
- >  NOAA Electronic Navigational Charts (ENC) ...
- >  Wetlands ...
- >  Elevation ...
- >  Boundaries ( Non-AEC) ...



Measu

Unit

Feet

Distanc

130.17

50 ft

Microsoft, Vantor | North C... Powered by Esri

NC Division of Coastal Management - 2025